

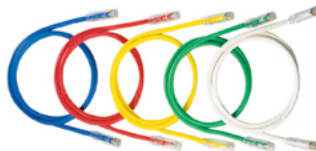
NetKey® Category 6 UTP Patch Cords

North America,
Latin America, Europe,
Middle East, Africa

PANDUIT
SPECIFICATION SHEET

SPECIFICATIONS

Category 6/Class E patch cords shall be constructed of UTP 24 AWG stranded copper cable and a modular plug at each end. Patch cords shall be used in all work area outlets and patch panels. Patch cords shall be wired to be compatible with both T568A and T568B wiring schemes.



TECHNICAL INFORMATION

Category 6/Class E channel performance:	Exceeds ANSI/TIA-568.2-D Category 6 and ISO 11801 Class E channel requirements at swept frequencies up to 250 MHz Meets ANSI/TIA-568.2-D and ISO 11801 Category 6 component requirements at swept frequencies up to 250 MHz \diamond
Cable diameter:	0.235 in. (6.0mm) nominal
FCC compliance:	Complies with ANSI/TIA-1096-A (formerly FCC Part 68); contacts plated with 50 microinches of gold
IEC compliance:	Meets IEC 60603-7
PoE compliance:	Supports IEEE 802.3af/802.3at and 802.3bt type 3 and type 4 PoE applications
Safety compliance:	cULus Listed; UL 1863 and CAN/CSA-C22.2 (UL File E129886)
RoHS compliance:	Compliant
Flammability rating:	CM rated

KEY FEATURES AND BENEFITS

100% Performance tested:	Confidence that each patch cord delivers specified performance
Patented tangle-free latch:	Prevents snags and provides easy release
Slender strain relief boot:	Provides easy access in high-density applications
Identification:	Provides identification of performance level, length, and quality control number for future traceability

APPLICATIONS

Applications include:

- Ethernet 10BASE-T, 100BASE-T (Fast Ethernet), and 1000BASE-T (Gigabit Ethernet)
- 155 Mb/s ATM, 622 Mb/s ATM, 1.2 Gb/s ATM
- Token Ring 4/16
- Voice over internet protocol (VoIP)

NetKey Category 6 Patch Cords

Foot lengths:	NK6PC [^] Y
Meter lengths:	NK6PC ^{**} M [^] Y

*Foot lengths: 1 – 20, 25, 30, 35, 40, 45, 50 feet

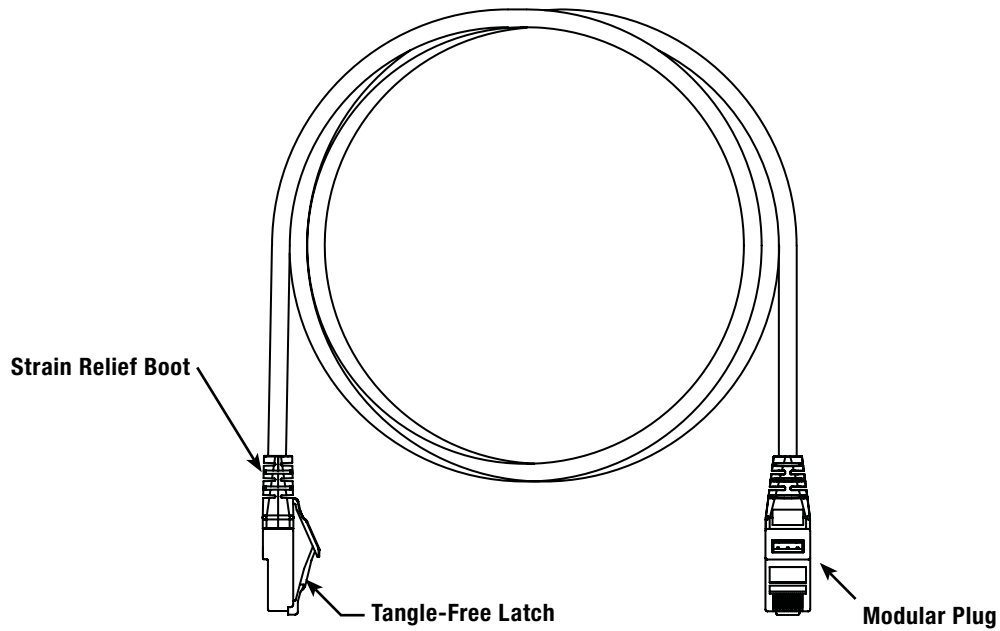
**Meter lengths: 1 – 5, 7, 10, 15, 20 meters

[^]Colors other than Off White: BU (Blue), BL (Black), RD (Red), YL (Yellow), GY (Gray), GR (Green), OR (Orange), VL (Violet)

\diamond Lengths 1 meter to 15 meters or 1 foot to 49 feet are guaranteed to meet TIA and ISO component and channel requirements. Lengths greater than 15 meters or 49 feet are guaranteed to meet ISO component and both TIA and ISO channel requirements.

NetKey® Category 6 UTP Patch Cords

ENGINEERING DRAWING



WORLDWIDE SUBSIDIARIES AND SALES OFFICES

PANDUIT US/CANADA
Phone: 800.777.3300

PANDUIT EUROPE LTD.
London, UK
Phone: 44.20.8601.7200

PANDUIT SINGAPORE PTE. LTD.
Republic of Singapore
Phone: 65.6305.7575

PANDUIT JAPAN
Tokyo, Japan
Phone: 81.3.6863.6000

PANDUIT LATIN AMERICA
Guadalajara, Mexico
Phone: 52.33.3777.6000

PANDUIT AUSTRALIA PTY. LTD.
Victoria, Australia
Phone: 61.3.9794.9020

For a copy of Panduit product warranties, log on to www.panduit.com/warranty

PANDUIT®

For more information
Visit us at www.panduit.com
Contact Customer Service by email: cs@panduit.com
or by phone: 800.777.3300

© 2024 Panduit Corp.
ALL RIGHTS RESERVED.
COSP564-WW-ENG
9/2024