

Manuals+

User Manuals Simplified.



Ubiquiti U6-LR Long-Range Access Point Instruction Guide

September 16, 2022September 16, 2022 ■ [Leave a comment on Ubiquiti U6-LR Long-Range Access Point Instruction Guide](#)

[Home](#) » [UBIQUITI](#) » Ubiquiti U6-LR Long-Range Access Point Instruction Guide 

Document

Contents [hide](#)

[1 Ubiquiti U6-LR Long-Range Access Point](#)

[2 Specifications](#)

[3 Introduction](#)

[4 What's In the Box?](#)

[5 Tools Required](#)

[6 Mounting](#)

[7 Installation](#)

[8 Cross Check](#)

[9 Connectivity](#)

[10 Frequently Asked Questions](#)

[11 Related Manuals / Resources](#)



Ubiquiti U6-LR Long-Range Access Point



Specifications

- **Product Dimensions** 10.16 x 10.12 x 3.31 inches
- **Item Dimensions LxWxH** 16 x 10.12 x 3.31 inches
- **Series** UniFi Access Point WiFi 6 Long-Range
- **Wireless Type** 802.11ax
- **Frequency Band Class** Tri-Band
- **Frequency** 5 GHz
- **Connectivity Technology** Wireless
- **Data Transfer Rate** 600 Megabits Per Second
- **Brand** Ubiquiti Networks

Introduction

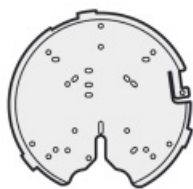
A high-performance access point called UniFi6 Long-Range (U6 LR) gives business networks strong, four-stream WiFi 6 coverage. With its 2.4 GHz (4x4 MIMO) and 5 GHz (4x4 MU-MIMO) bands, the U6 LR can achieve an aggregate throughput rate of up to 3 Gbps. To increase its service area, it also has a sideways, downward-tilted antenna layout. The U6 LR may be installed indoors or outdoors and blends in with almost any surroundings, so you never have to sacrifice the elegance of your home to have superb wireless coverage. The U6 LR makes it easier to introduce WiFi 6 to enterprise networks that serve several clients.

What's In the Box?

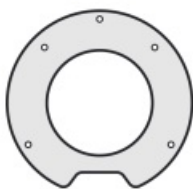
- Ubiquiti Networks U6-LR UniFi 6 AX3000 Long-Range Access Point
- Wall Mounting Kit
- Ceiling Mounting Kit
- Limited 1-Year Warranty



a



b



c



M3

d



e



M4

f



g



h



M3

i



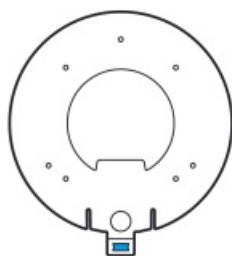
j



k



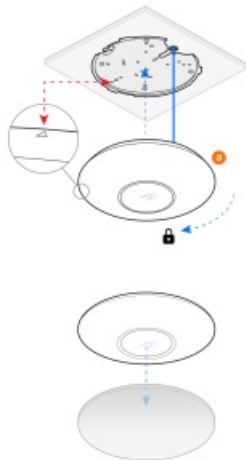
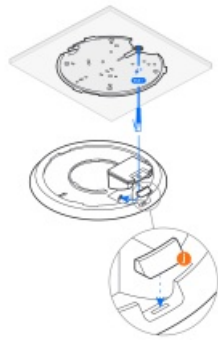
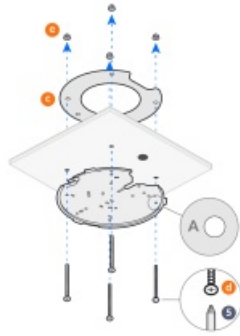
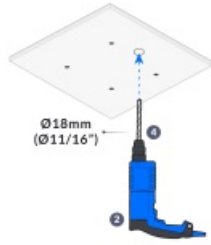
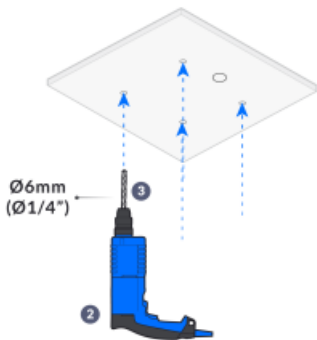
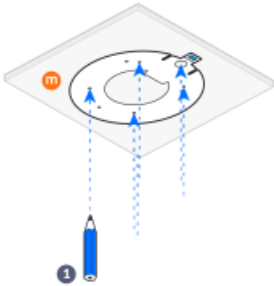
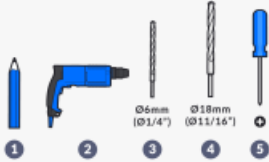
l



m

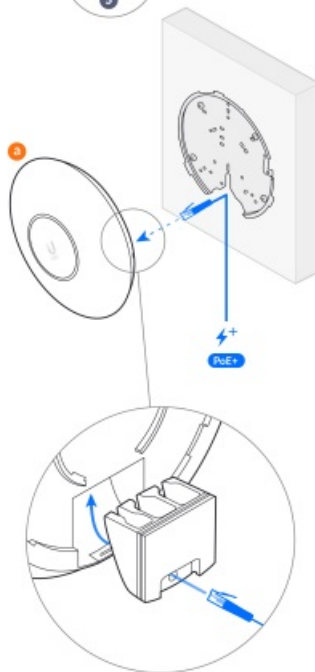
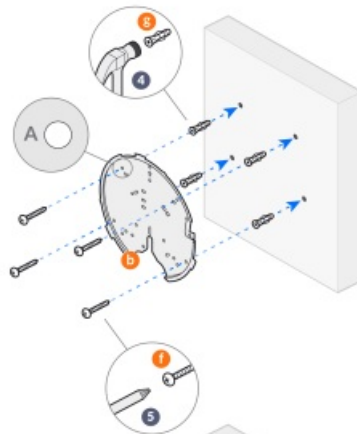
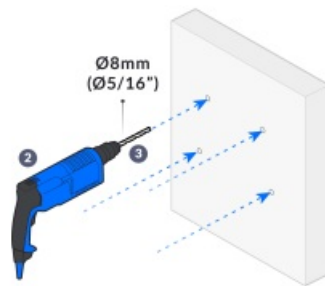
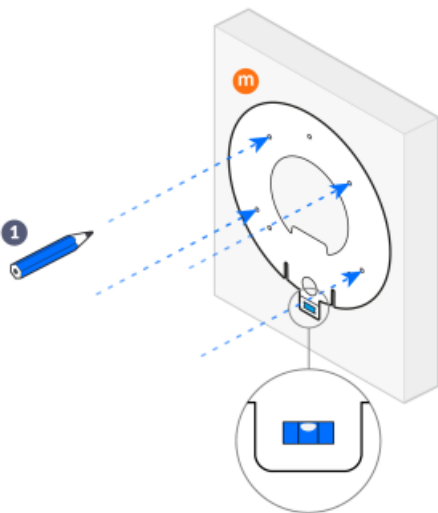
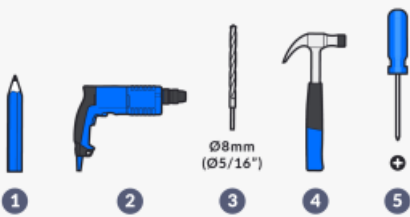
Tools Required

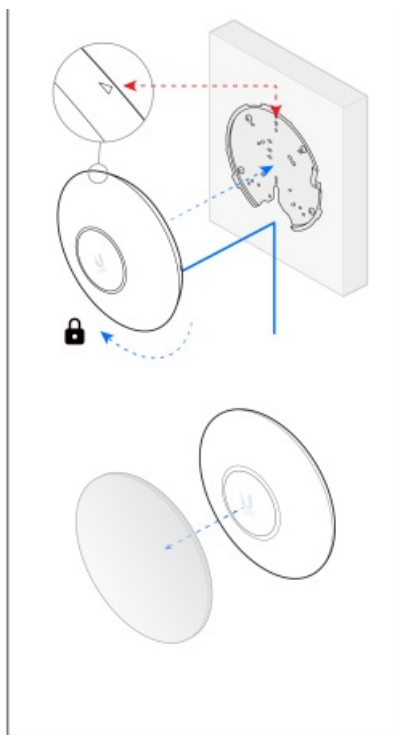
A



Mounting

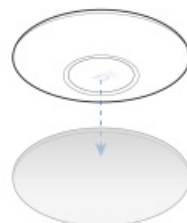
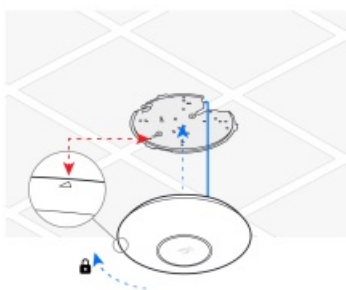
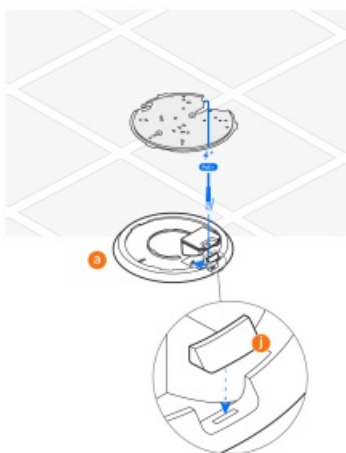
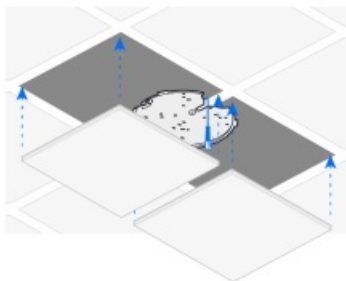
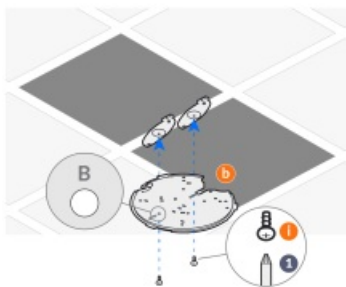
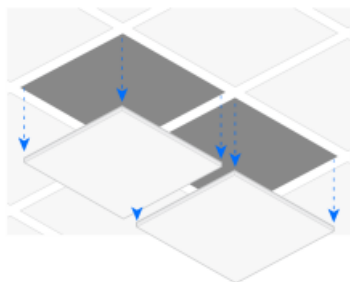
C



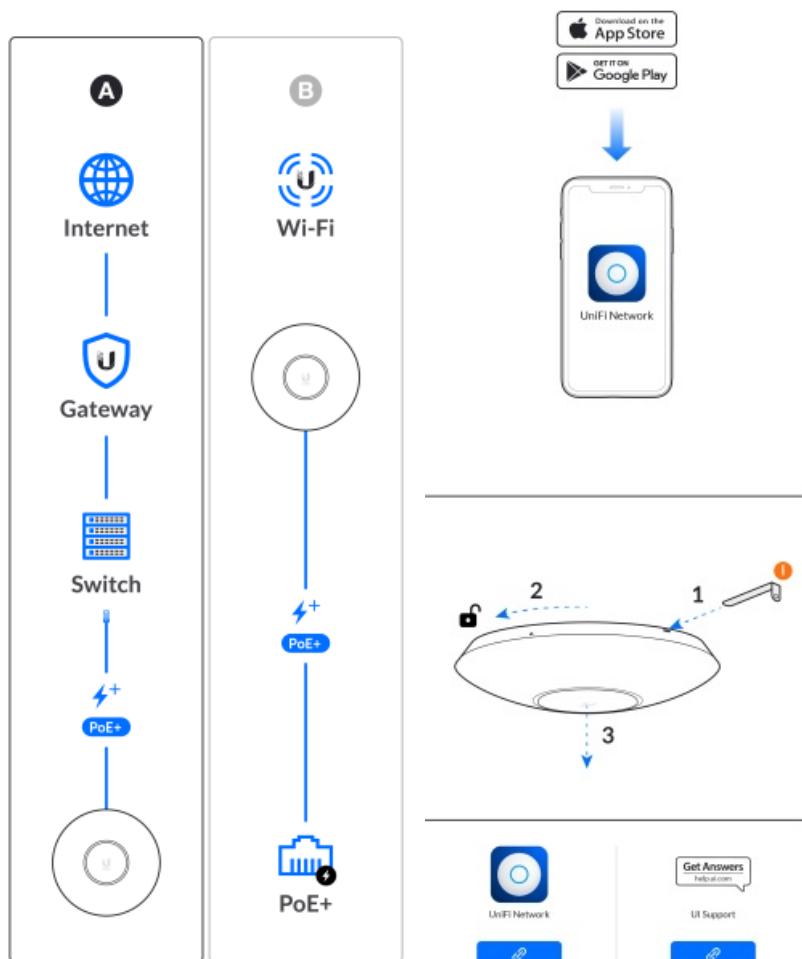


Installation

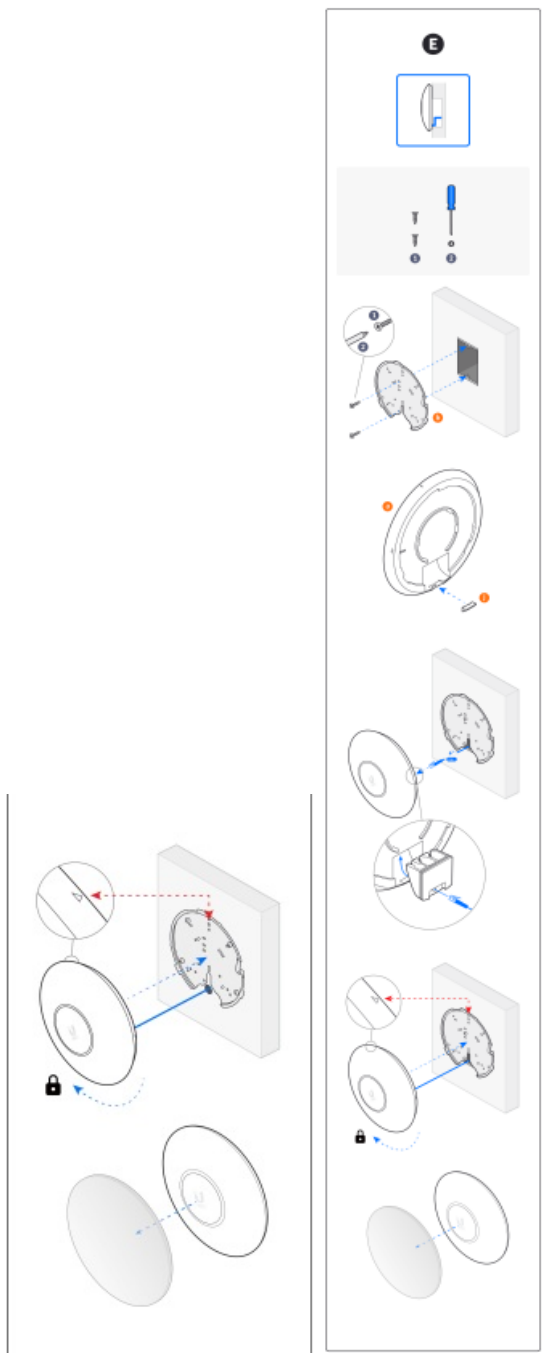
D



Cross Check



Connectivity



Frequently Asked Questions

Do you need a unifi os console device to use this? will it work on it's own (plugged into a router with poe) without anything else needed?

Yes, it will work on its own. Since the device will not come with POE injector, all you need is buy one with 48V-24W.

How many clients can You connect at same time in this access point ?

At least 200+ users at the same time.

Can this be connected to an existing net gear router?

I don't think so. But why would you want to. The Ubiquiti ecosystem and software is really good. Get a UniFi Dream Machine for a router.

Do i have to use a poe switch? do this unit have independent power source?

It does not have an ac adapter, you need to use PoE. This is pretty much the norm for commercial wifi products.

How many devices does this come with?

One.

So is this just a router?

No, this is an Access Point. However, you can install a virtual controller on a server or VM and use some level of routing.

How many ssids can you broadcast from this ap?

The datasheet says "8 per radio." The figure is thus either 16, if you use different SSID for 2.4 and 5 GHz bands, or 8, if you pair up 2.4 and 5 bands under the same BSSID. No idea if you can mix-and-match to land on a number in-between; I only have run UniFi networks with the same SSIDs assigned on both bands.

If my switch has PoE, why do you need a power injector?

If your switch has PoE and it can supply adequate power (check because they aren't all the same) you don't need a power injector. A power injector simply converts an ethernet cable to a PoE cable in you don't have a PoE switch.

Will this work for a 2 story house 5g and 2.4 g?

Yes, i think it should work. In our place it is covering about 6 or 7 thousand square feet area in a prayer hall supporting 50+ users.

Can i use the ubiquiti poe48-24w-g with the u6-lr-us?

It use 48V, 0.5A PoE. So, yes you can.

Does it work with the switch Us-16-150w?

I'm using the Switch 8 PoE (150W) to power one of mine, so the 16 port version should work fine.

Does anyone have one of these? Please review it.

There are a lot of technical reviews online that would do this product far more justice than trying to thoroughly review it in an Amazon comment. I have 1 Wifi6 LR and 2 Wifi6 lites, and w/approx 60 wifi devices (including a few Wifi6 clients) they are blazingly fast and bulletproof.

Does this come with wall or ceiling mounting bracket?

Yes. It comes with a mounting bracket. You secure the mounting bracket to the ceiling or wall, then the AP simply twist locks onto the bracket.

Is this for two? Considering it's double the price?

No.

What is the maximum range of this 'long range' unit?

The U6 LR can reach an aggregate throughput rate up to 3 Gbps with its 5 GHz (4x4 MU-MIMO and OFDMA) and 2.4 GHz (4x4 MIMO) bands.

Related Manuals / Resources



[UBIQUITI UAP-AC-LR-US Access Point AC Long-Range User Manual](#)

E-Label User Information FCC ID: SWX-U6IWR IC ID: 6545A-U6IWR
Ubiquiti Inc. will be incorporating the E-Label procedures per...

[UBIQUITI UAP-AC-LR UAP AC LR Access Point User Guide](#)

UBIQUITI UAP-AC-LR UAP AC LR Access Point introduction Included only in the single-pack of the UAP-AC-LR.

Installation Requirements...



[UBIQUITI UniFi6 In Wall WiFi 6 Access Point Instructions](#)

UBIQUITI UniFi6 In Wall WiFi 6 Access Point What's In Box Tools Required Installation



[UBIQUITI UA-Hub UniFi Access Hub User Guide](#)

Hub 1. 2. 3. 4. ui.com/install unifi.ui.com ©2021 Ubiquiti Inc. All rights reserved. Ubiquiti. Ubiquiti Networks. the Ubiquiti...



Leave a comment

Your email address will not be published. Required fields are marked *

Comment *

Name

Email

Website

☐ Save my name, email, and website in this browser for the next time I comment.

Post Comment

[Manuals+](#),

- [home](#)
- [privacy](#)