



Installation Guide

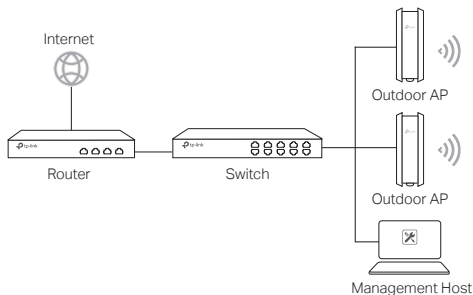
Outdoor Access Point

Note: The image may differ from the actual product.

Typical Network Topology

■ Managed Mode

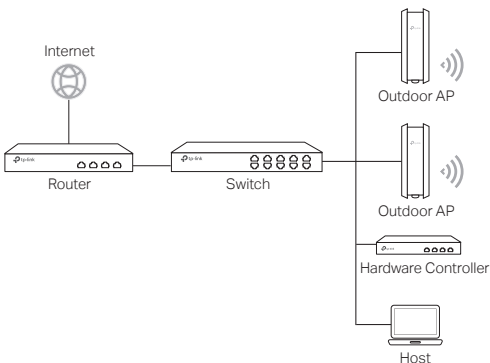
Via Centralized Management Software



A computer running the centralized management software, which can be in the same or different subnet with the APs, is used to centrally manage the APs.

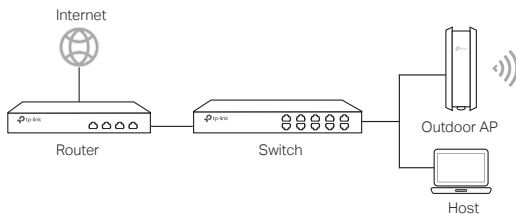
You can get the corresponding software from our website <http://www.tp-link.com>.

Via Hardware Controller (For certain devices)



The hardware controller can be in the same or different subnet with the APs. The management host is used to log in to the hardware controller to centrally manage the APs.

■ Standalone Mode



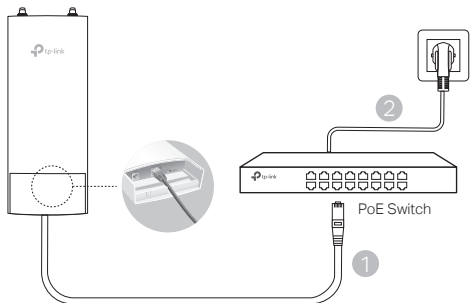
Hardware Connection

Choose a method to connect your device according to the accessories.

■ Via PoE Switch

Some APs can be powered via the PSE device (such as a PoE switch) which complies with Power Source Class 2 (PS2) or Limited Power Source (LPS) of IEC 62368-1.

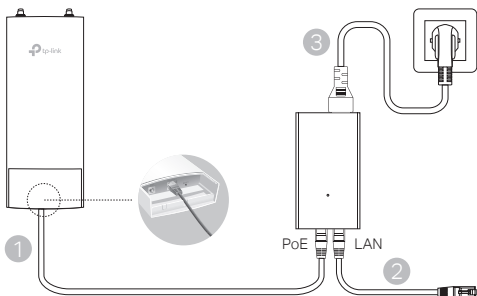
Note: Availability depends on the actual product. Please refer to the product specifications.



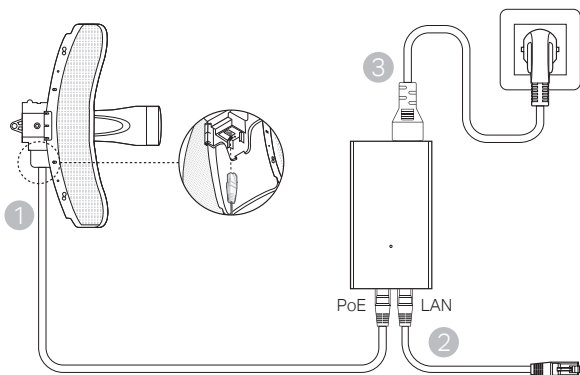
■ Via PoE Adapter

Some APs can be powered via the PoE adapter.

Note: Availability depends on the actual product. Please refer to the product specifications.



Or

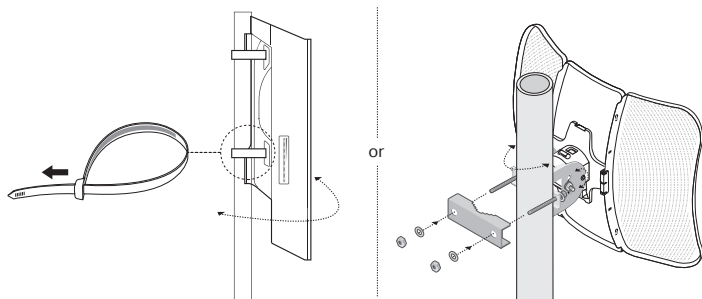


Hardware Installation

1. Choose a method to mount the device.

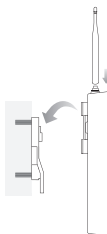
■ Mounting the Device on a Pole

At the selected site, attach the device to a suitable point of the pole and then approximately align the device to the direction that you have oriented.



■ **Mounting the Device on the Wall (for the product with mounting brackets)**

Mount the mounting bracket to the preferred position in the wall. Push and slide the device to lock it into place. Then connect the antennas to the device.



2. Install the waterproof seal. (For certain devices)

Before installing, fit the Ethernet cable through the spiral cover, bracket, and O-ring. Then follow the steps as shown in the picture:

- (1) Connect the Ethernet cable to the port.
- (2) Fit the O-Ring to the head of the bracket, and screw the bracket to the body of the device.
- (3) Fit the Ethernet cable through the seal's slit with the thicker side towards the bracket.
- (4) Plug the seal to the bracket.
- (5) Screw the spiral cover to the bracket.

