



Package content



UniFi Flex Mini Switch Power Adapter (5V,

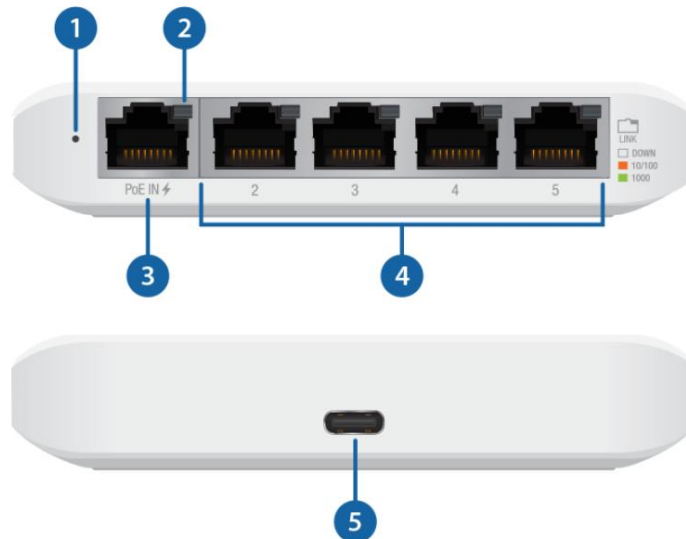
1 A)*

**Included in USW-Flex-Mini single pack only.*

System Requirements

- Linux, Mac OS X or Microsoft Windows
- 7/8/10 We recommend Java Runtime Environment 1.8
- or higher Web browser: Google Chrome (other browsers may have limited functionality)
- UniFi Controller Software v5.12.5 or later, available at: ui.com/download/unifi

Device overview





USW-Flex-Mini Quick Start Guide



1 System LEDs	
flashing white	Starting.
fixed white light	Factory defaults, pending approval.
Alternation between white and blue	The device is busy; do not touch or unplug it. It usually indicates that some process is taking place, such as a firmware update.
steady blue light	Network approval successful and correct operation.
blinking blue	It is used to locate a device. The System LED will flash blue when you click the Locate option in the UniFi Controller software. The software will also show the location of the UniFi switch on the map.
2 RJ45 Link/Speed/Activity LED (Ports 1 - 5)	
disabled	not connected
Amber	Link established at 10/100 Mbps Blinking indicates activity
Green	Link established at 1000 Mbps (1 Gbps) Blinking indicates activity
3 Puerto PoE In	
This RJ45 port supports 10/100/1000 Mbps Ethernet connection and 802.3af/at PoE input.	



RJ45 ports support 10/100/1000 Mbps Ethernet connections.

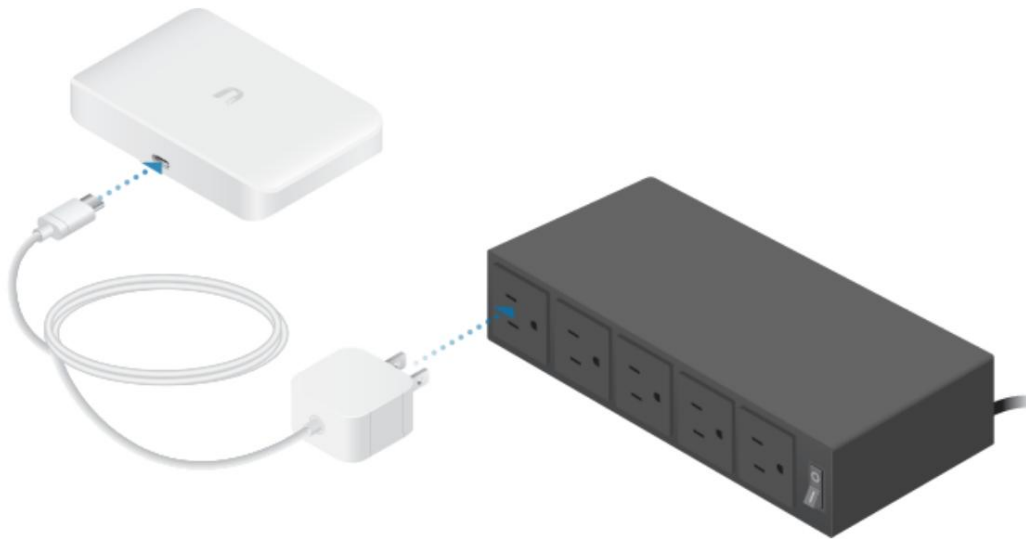
5 power port

Connect the included power adapter to the power port.

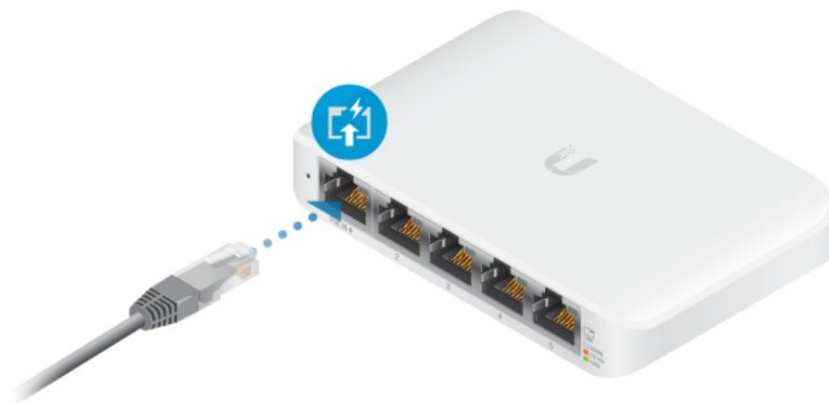
6 Reset button

Restore factory defaults. The device should be running after the startup is complete. Press and hold the Reset button for about 10 seconds until the LED indicator starts flashing and then stays on continuously. After a few seconds, the LED indicator will turn off and the device will reboot automatically.

Power connection



O



ethernet connection



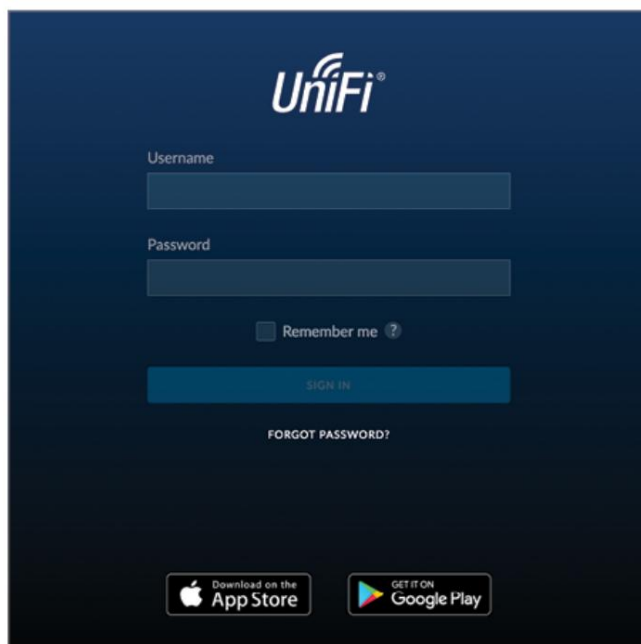
Software installation

Download and install the latest version of the UniFi driver software at ui.com/download/unifi and follow the instructions on the screen.



Note: If you already have UniFi Controller version 5.12.5 or later installed, go to the "[UniFi Switch Deployment](#)" section.

Once you have installed the software and run the UniFi Setup Wizard, a login screen for the UniFi Controller management interface will appear. Enter the administrator name and password you created and click Sign In.



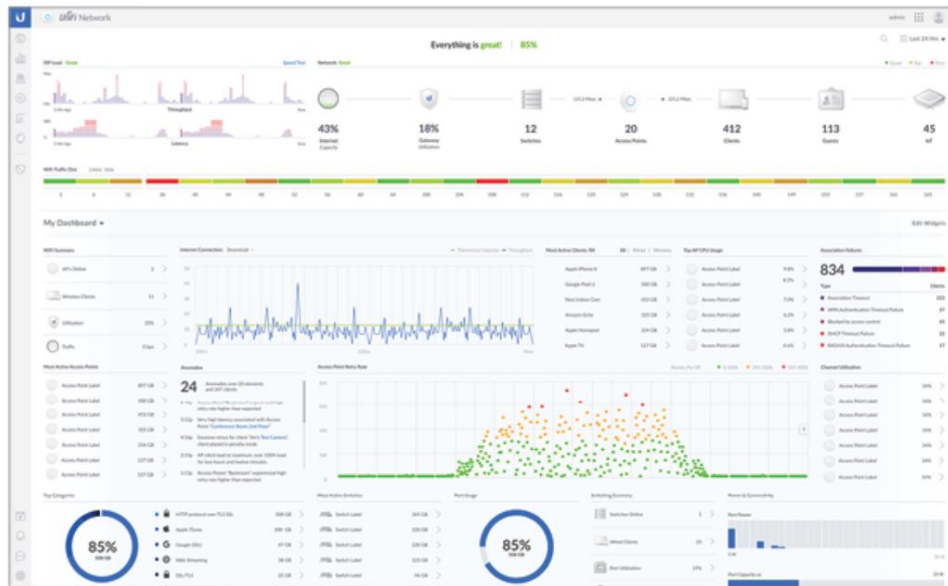
To deploy the UniFi Switch, go to "[UniFi Switch Deployment](#)".

You can manage your wireless network and view network statistics through the UniFi Network Controller's management interface. For information on setting up and using the UniFi Network controller software, please refer to the user guide located on our website: ui.com/download/unifi

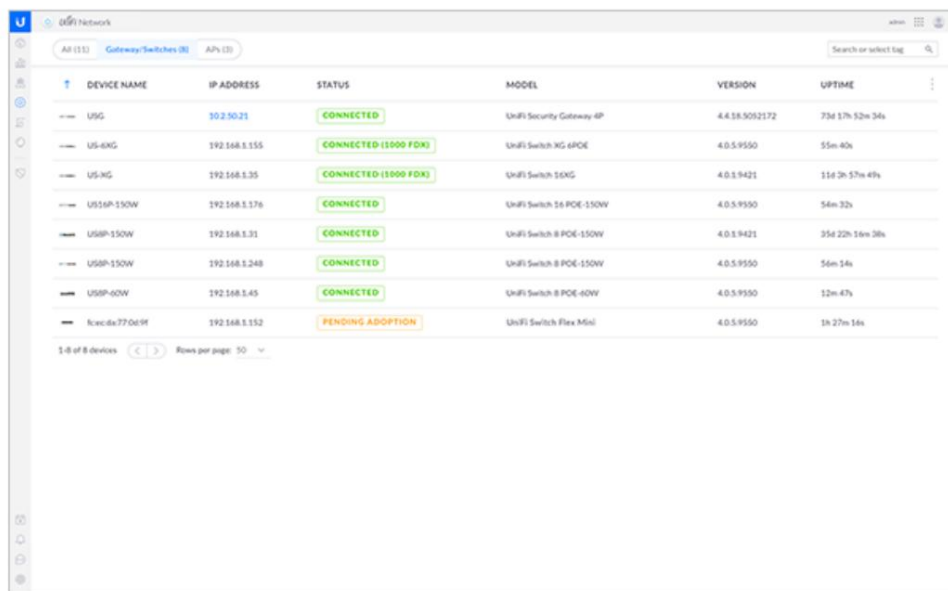


Implementation of UniFi Quick Start Guide

1. From the UniFi controller panel, click Devices on the toolbar left menu.



2. On the Devices screen, locate the UniFi Switch in the list of devices in the Model column. To approve the UniFi Switch, click Adopt.



3. The System LED on the UniFi Switch will turn blue to confirm that has been successfully implemented.

specs

USW Flex Mini	
Dimensions	107,16 x 70,15 x 21,17 mm (4,22 x 2,76 x 0,83")



USW-Flex-Mini Quick Start Guide

USW-Flex Mini

Weight	150 g (5,29 oz)
Interfaces de red	(5) 10/100/1000 Mbps RJ45 ports
PoE In interface	PoE 802.3af/at (pins: 1, 2+; 3, 6-)
maximum power consumption	2.5W
feeding method	Puerto USB Tipo C, 5 V PoE 802.3af/at (44 - 57 V CC, 0.05 - 0.04 A)
Power supply	5V, 1A power adapter*
voltage range	
USB Type-C port	4,7 - 5,2 V CC
PoE 802.3af/at	44 - 57 V CC
Luces LED	
System	state
RJ45 data port	link/speed/activity
ESD/EMP protection	±16 kV air, ±12 kV contact
Operating temperature	-5 to 45° C (23° F to 113° F)
operating humidity	10 to 90% non-condensing
Certifications	CE, FCC, IC

* *Included in USW-Flex-Mini single pack only.*

safety instructions

1. Read, follow and save these instructions.
2. Pay attention to all warnings.
3. Only use the devices or accessories indicated by the manufacturer.



WARNING: Lack of adequate ventilation may result in a fire hazard.
Keep at least 20mm clearance next to the ventilation holes for proper ventilation.



WARNING: To reduce the risk of fire or electric shock, do not expose the product to rain or moisture.



WARNING: Do not use this product in a place where it can be submerged in water.



WARNING: Avoid using this product during a lightning storm. There is a remote possibility of an electrical discharge caused by lightning.

electrical safety information

1. It is mandatory to comply with the current, frequency and voltage requirements indicated on the manufacturer's label.
Connection to a power source other than those specified may result in malfunction, equipment damage, or fire hazard if limitations are not followed.



limited warranty

ui.com/support/warranty

The limited warranty requires arbitration to resolve disputes on a case-by-case basis and, where appropriate, specifying arbitration instead of jury trials or class actions.

Compliance

FCC

Changes or modifications not expressly approved by the party responsible for compliance could void the user's authority to operate the equipment.

This device complies with Part 15 of the FCC Rules. Operation is subject to the following two conditions.

1. This device may not cause harmful interference, and 2. This device must accept any interference, including interference that may cause undesired operation.

This equipment has been tested and found to comply with the limits for a Class B digital device, pursuant to part 15 of the FCC Rules. These limits are designed to provide reasonable protection against harmful interference in a residential installation. This equipment generates, uses, and can radiate radio frequency energy and, if not installed and used in accordance with the instructions, may cause harmful interference to radio communications. However, there is no guarantee that interference will not occur in a particular installation. If this equipment does cause harmful interference to radio or television reception, which can be determined by turning the equipment off and on, the user is encouraged to try to correct the interference by one or more of the following measures:

- Reorient or relocate the receiving antenna.
- Increase the separation between the equipment and receiver.
- Connect the equipment into an outlet on a circuit different from that to which the receiver is connected.
- Consult the dealer or an experienced radio/TV technician for help.

ISED from Canada

CAN ICES-3(B)/NMB-3(B)

Australia and New Zealand



CE marked

The CE marking of this product indicates that the product complies with all applicable directives.



WEEE Compliance Statement



online resources

