

Quick Installation Guide

Wireless Dual-Band Router

Set up with videos:



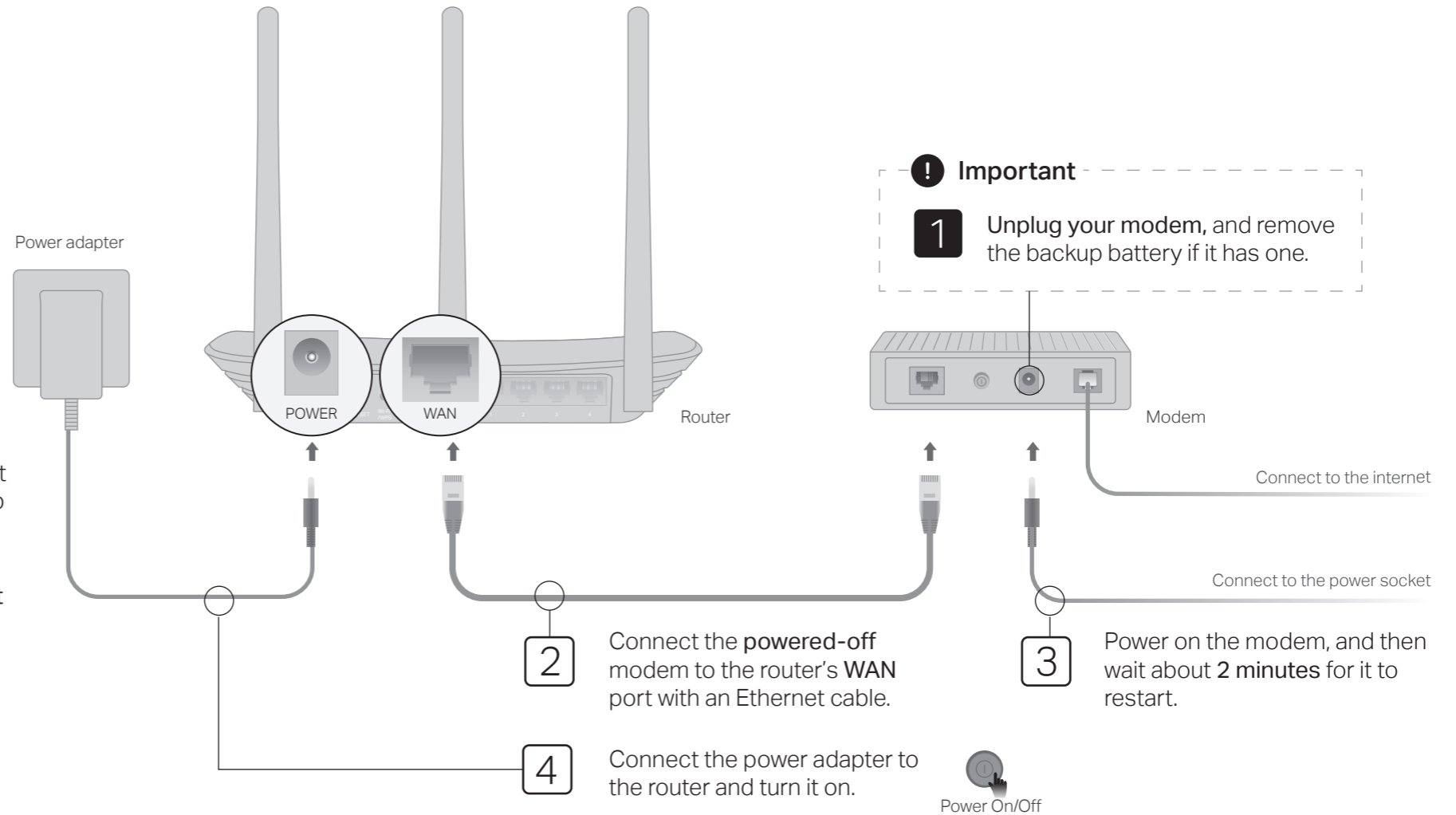
Scan the QR code or visit <https://www.tp-link.com/support/setup-video/#wi-fi-routers> to search for the setup video of your product.



* Images may differ from actual products.

Router Mode

- If your internet comes from an Ethernet outlet, connect the router's **WAN port** to it, then follow Step 4 and Step 5 to complete the hardware connection.
- If you want to configure this new router as an access point to extend your network, refer to the **Access Point Mode** section on the back page.



5 Verify that the following LEDs stay solid on to confirm the hardware is connected correctly.



Note: If the 2.4 GHz LED and 5 GHz LED are off, press and hold the WPS/Wi-Fi button on the rear panel for about 5 seconds, then release the button. Both LEDs will turn on.

6 Configure the router

1. Connect your computer to the router (Wired or Wireless).

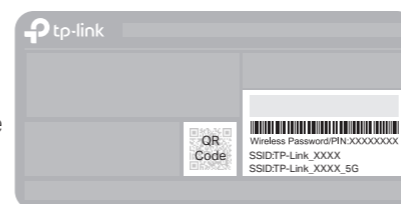
• **Wired**

Turn off the Wi-Fi on your computer and connect it to the router via an Ethernet cable.

• **Wireless**

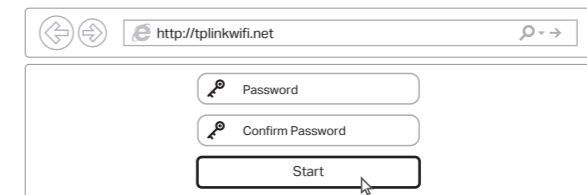
- Find the product label at the bottom of the router.
- Use the default network names (SSIDs) and password to join the 2.4 GHz or 5 GHz network.

Tip: If you are using a smartphone or tablet, you can scan the QR code to join the preset 2.4 GHz network directly.



2. Launch a web browser, and enter <http://tplinkwifi.net> or <http://192.168.0.1> in the address bar. Create a password to log in.

Note: If the login window does not appear, please refer to [FAQ > Q1](#).

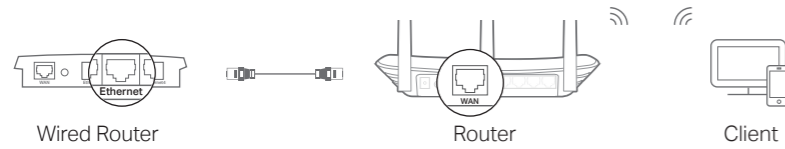


3. Run the **Quick Setup**, select **Wireless Router** and follow the step-by-step instructions to set up the internet connection.

Enjoy the internet!

Access Point Mode

In this mode, the router transforms your existing wired network to a wireless one.



- Power on the router.
- Connect the router's WAN port to your wired router's Ethernet port via an Ethernet cable as shown above.
- Connect a computer to the router via an Ethernet cable or wirelessly by using the **SSID** (network name) and **Wireless Password** printed on the label at the bottom of the router.
- Launch a web browser and enter <http://tplinkwifi.net> in the address bar. Create a password to log in.
- Run the **Quick Setup**, select **Access Point** and follow the step-by-step instructions of the Quick Setup to set up the internet connection.

 **Enjoy the internet!**

Range Extender Mode

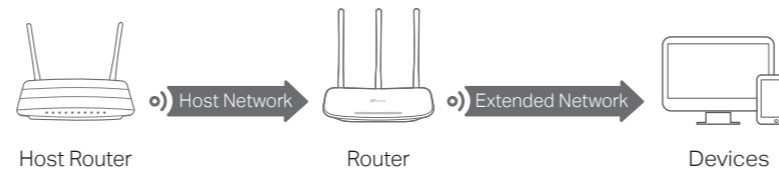
In this mode, the router boosts the existing wireless coverage in your home.


1. Configure

- Place the router next to your host router and power it on.
- Connect a computer to the router via an Ethernet cable or wirelessly by using the **SSID** (network name) and **Wireless Password** printed on the label at the bottom of the router.
- Launch a web browser and enter <http://tplinkwifi.net> in the address bar. Create a password to log in.
- Run the **Quick Setup**, select **Range Extender** and follow the step-by-step instructions of the Quick Setup to set up the internet connection.

2. Relocate

Place the router about halfway between your host router and the Wi-Fi "dead" zone. The location you choose must be within the range of your existing host network.



 **Enjoy the internet!**

Button Explanation

BUTTON	DESCRIPTION
	Press and hold for 1 second to enable the WPS function.
WPS/Wi-Fi	Press and hold for about 5 seconds to turn on or off the wireless function of the router.
Reset	Press and hold this button until all LEDs turn off to reset the router to its factory default settings.

Tether App

TP-Link Tether app provides a simple, intuitive way to access and manage your router. Scan the QR code to download Tether from the Apple App Store or Google Play.



More Features

The TP-Link router supports various features, including Guest Network, Parental Controls, Access Control and more.

You can log in to the router's web management page at <http://tplinkwifi.net> to configure these functions. For instructions, please refer to the user guide at <https://www.tp-link.com>.

FAQ (Frequently Asked Questions)

Q1. What can I do if the login window does not appear?

- Reboot your router and try again.
- If the computer is set to a static or fixed IP address, change the setting to obtain an IP address automatically.
- Verify that <http://tplinkwifi.net> is correctly entered in the web browser. Alternatively, enter <http://192.168.0.1> or <http://192.168.1.1> in the web browser and press **Enter**.
- Use another web browser and try again.
- Disable then re-enable the network adapter being used.

Q2. What can I do if I cannot access the internet?

- Reboot your modem and router, then try again.
- Check if the internet is working properly by connecting a computer directly to the modem using an Ethernet cable. If it is not, contact your internet service provider.
- Log in to the web management page of the router, and go to the **Status** page to check whether the WAN IP address is valid or not. If it is, please run the Quick Setup again; otherwise, recheck the hardware connection.

A4. For cable modem users, log in to the web management page of the router. Go to **Network > MAC Clone**, click **Clone MAC Address** and click **Save**, then reboot both the modem and the router.

Q3. How do I restore the router to its factory default settings?

- While the router is powered on, press and hold the **Reset** button on the rear panel of the router until all LEDs turn off, then release the button.
- Log in to the web management page of the router. Go to **System Tools > Factory Defaults**, click **Restore**. The router will restore and reboot automatically.

Q4. What can I do if I forgot my web management password?

- Refer to **FAQ > Q3** to reset the router, and then create a password to log in.

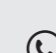
Q5. What can I do if I forgot my wireless network password?

- The factory default Wireless Password/PIN is printed on the product label of the router.
- Connect a computer to the router via an Ethernet cable. Log in to the


router's web management page, and go to **Wireless 2.4GHz (or Wireless 5GHz) > Wireless Security** to obtain or reset your wireless password.

Safety Information

- Keep the device away from water, fire, humidity or hot environments.
- Do not attempt to disassemble, repair, or modify the device. If you need service, please contact us.
- Do not use any other chargers than those recommended.
- Do not use damaged charger or USB cable to charge the device.
- Do not use the device where wireless devices are not allowed.
- Adapter shall be installed near the equipment and shall be easily accessible.

 For technical support, replacement services, user guides, and other information, please visit <https://www.tp-link.com/support>, or simply scan the QR code.



 To communicate with TP-Link users or engineers, please join the TP-Link Community at <https://community.tp-link.com>.