

AM-2G15-120 Quick Start Guide

Package content



Antenna



Protective cover



U-shaped supports (quant.: 2)



Post Brackets (Qty: 2)



Foot Clamps (Qty: 2)



Pan head screws (qty: 4)



Serrated Flange Screws
(Qty: 4)



Serrated Flange Nuts
(Qty: 8)



Cables RF (cant.: 2)

installation requirements

- Rocket®M2 (sold separately)
- 12 and 13mm
- wrenches Category 5 (or higher) shielded cabling must be used for all Ethernet connections and must be connected to the AC ground of the PoE.

We recommend that you protect your networks from harmful outdoor environments and AM-2G15-120 Quick Start Guide electrostatic discharge phenomena with Ubiquiti's industrial-grade shielded Ethernet cable. For more information, visit ui.com/toughcable

Device installation

1.



2.

AM-2G15-120 Quick Start Guide



3.



4.

AM-2G15-120 Quick Start Guide



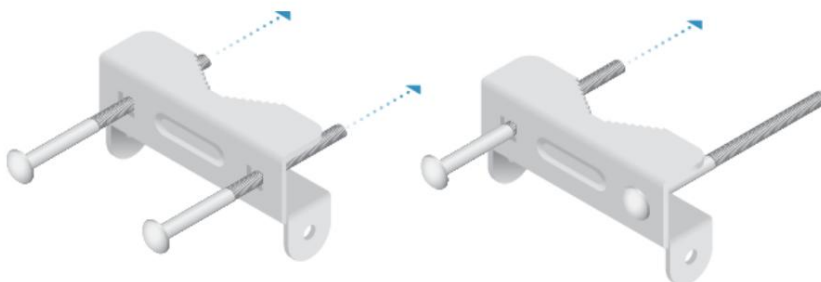
5.

AM-2G15-120 Quick Start Guide



Note: Orient the U-brackets as shown.

6.



7.

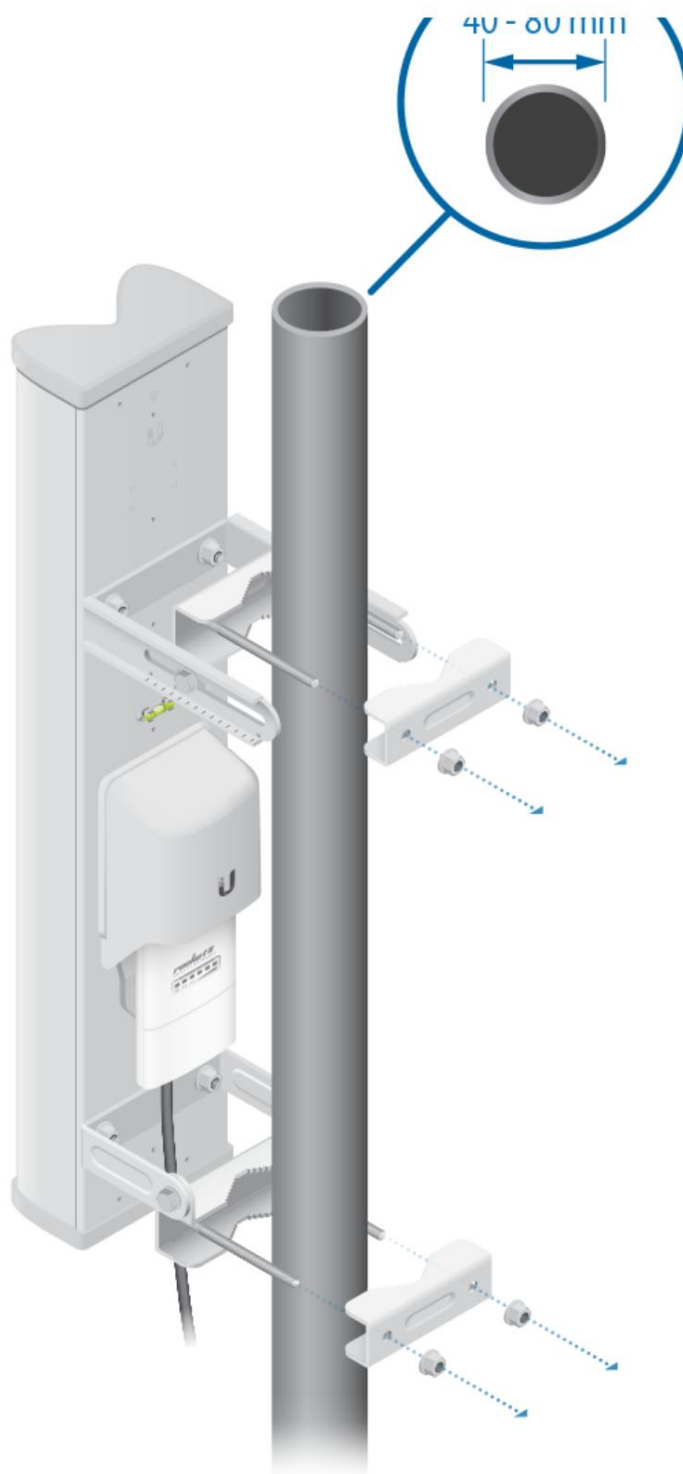
AM-2G15-120 Quick Start Guide



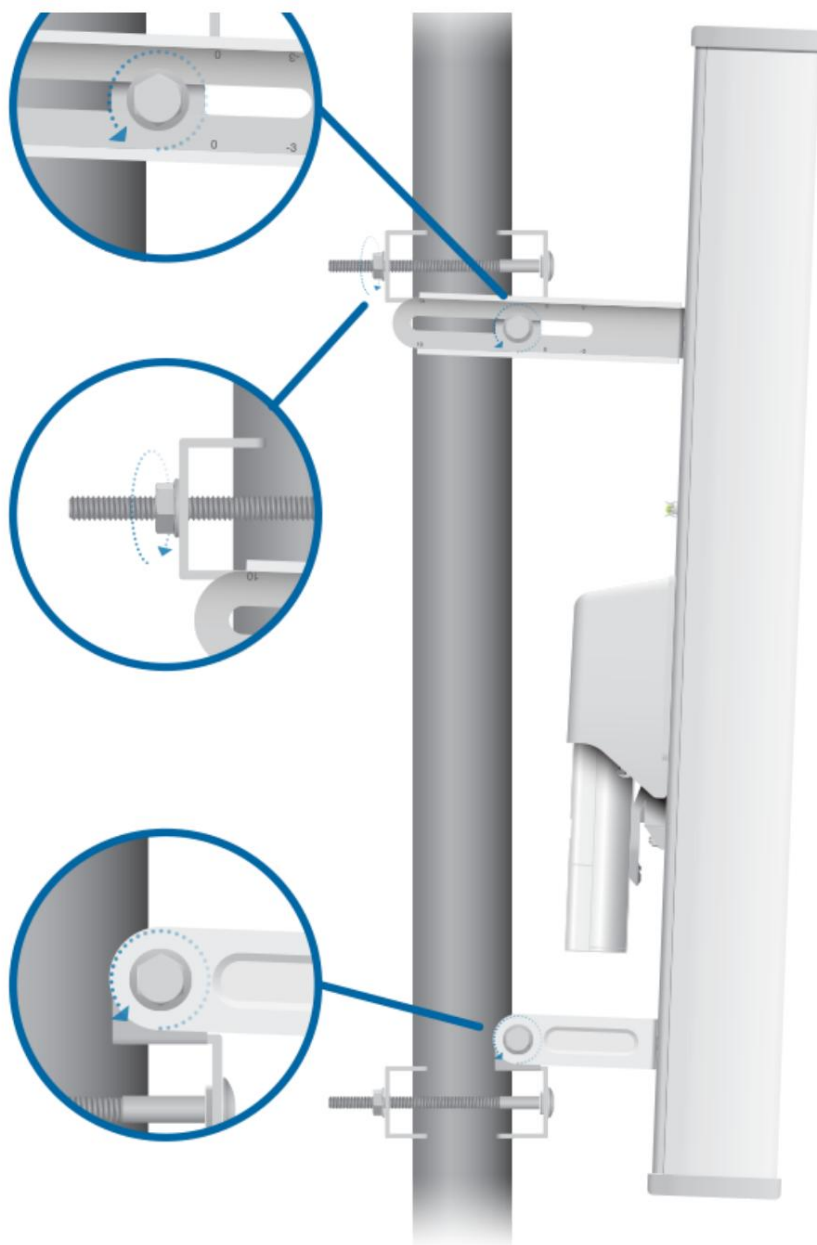
Note: Tighten screws by hand.

8.

AM-2G15-120 Quick Start Guide



AM-2G15-120 Quick Start Guide



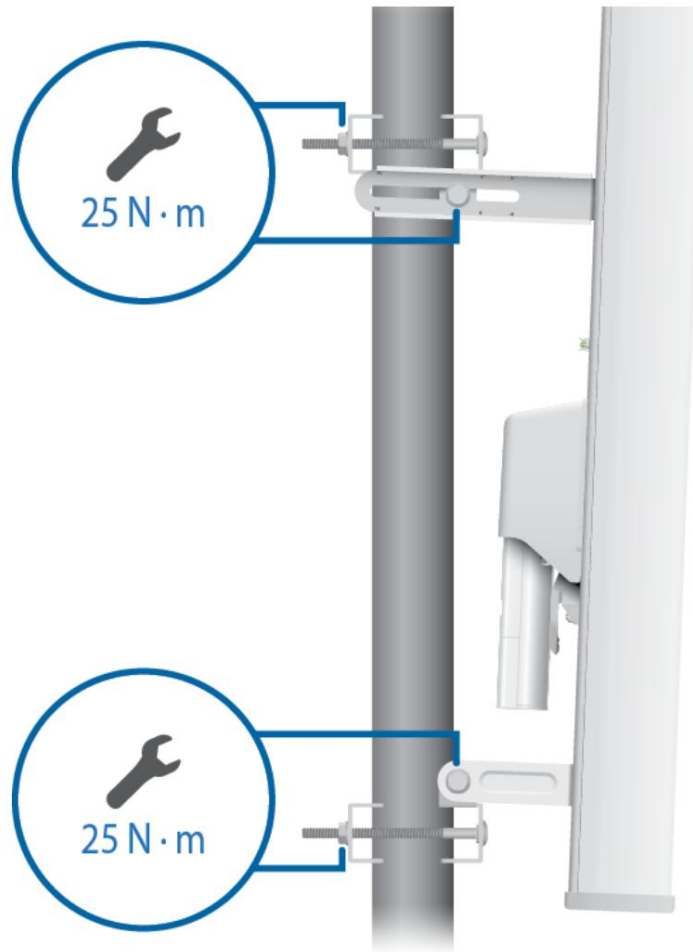
Note: The antenna has a 4° electrical downward tilt.

AM-2G15-120 Quick Start Guide



Note: The brackets may slide down the post, depending on the angle of inclination of the lift.

AM-2G15-120 Quick Start Guide



Specifications

AM-2G15-120	
Dimensions	700 x 145 x 93 mm (27,56 x 5,71 x 3,66")
Weight (mount included)	4,0 kg (8,82 lb)
Frequency	2,3 - 2,7 GHz
Revenue	15,0 - 16,0 dBi
Amplitud HPOL	123° (6 dB)
VPOL amplitude	118° (6 dB)
lift amplitude	9°
electric tilt down	4°
VSWR max.	1,5:1
Wind resistance	200 km/h (125 mph)

AM-2G15-120 Quick Start Guide

wind load	169 N y 200 km/h (38 lbf y 125 mph)
Polarization	Lineal doble
Cross Polarity Isolation	28 dB min
ETSI specification	EN 302 326 DN2
Mounting	Universal pole mount, Rocket mount and waterproof RF cables included

safety instructions

1. Read, follow and save these instructions.
2. Pay attention to all warnings.
3. Only use the devices or accessories indicated by the manufacturer.



WARNING: Do not use this product in a location where it may be submerged in water.



WARNING: Avoid using this product during a lightning storm. There is a remote possibility of an electrical discharge caused by lightning.

electrical safety information

1. It is mandatory to comply with the current, frequency and voltage requirements indicated on the manufacturer's label. Connection to a power source other than those specified may result in malfunction, equipment damage, or fire hazard if limitations are not followed.
2. This equipment contains no operator-serviceable parts. Only a qualified service technician should provide services.

limited warranty

ui.com/support/warranty

The limited warranty requires arbitration to resolve disputes on a case-by-case basis and, where appropriate, specifying arbitration instead of jury trials or class actions.

Compliance

Radio Frequency Exposure Warning

The antenna and transmitter must be installed to maintain a separation distance from people and must not be co-located or used in conjunction with any other antenna or transmitter. For the specific separation distance, see the quick start guide for your Rocket device (transmitter).

Declaration of conformity

online resources

